



GMT MONTHLY MEMBERSHIP PROGRESS REPORT

Results as of: 5/31/2020

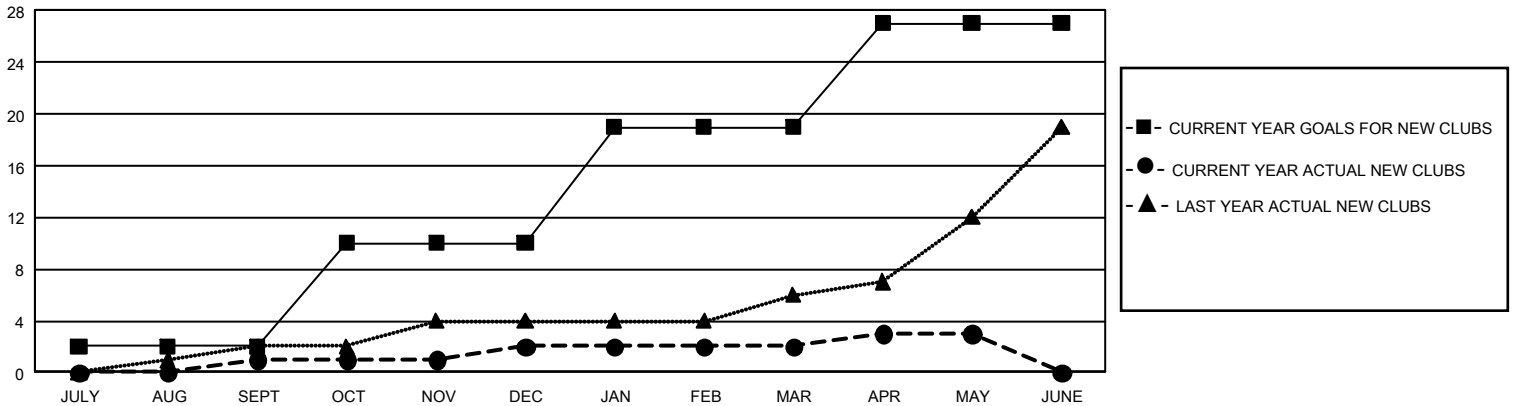
GMT Constitutional Area 3, Group F

GMT: OPEN

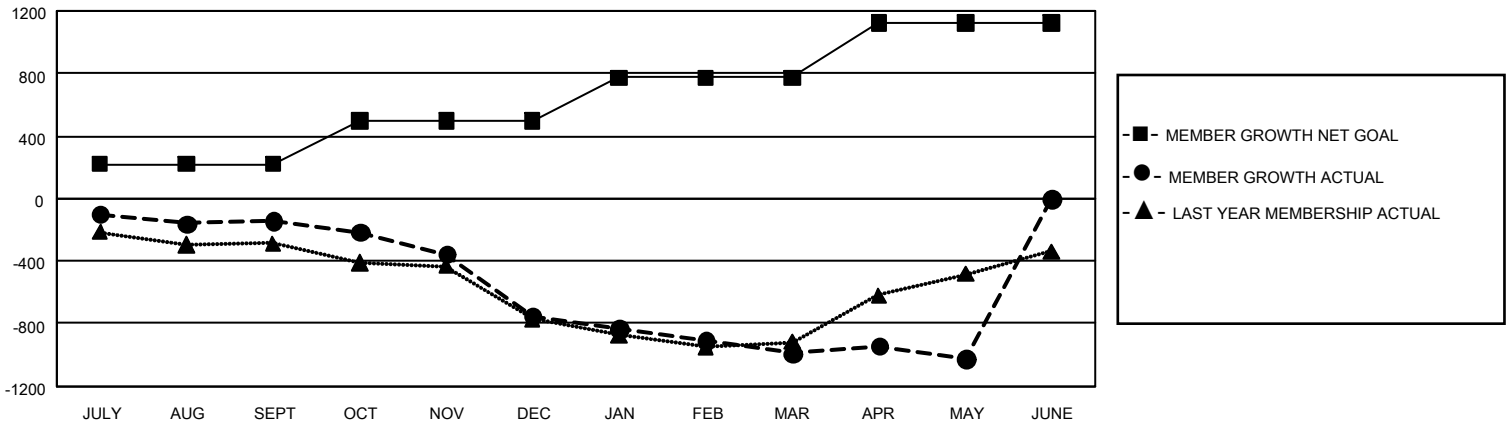
REPORT DOES NOT INCLUDE CLUBS IN UNDISTRICTED AREAS.

Clubs				Members			
RESULTS FOR 2019-2020				RESULTS FOR 2019-2020			
QUARTER	NEW CLUB GOAL	NEW CLUBS	DROPPED CLUBS	QUARTER	MEMBER GROWTH NET GOAL	MEMBER GROWTH ACTUAL	DROPPED MEMBERS ACTUAL (including transfers)
JULY/AUG/SEPT	6	1	2	JULY/AUG/SEPT	663	297	410
OCT/NOV/DEC	24	1	8	OCT/NOV/DEC	825	271	853
JAN/FEB/MAR	27	0	2	JAN/FEB/MAR	831	227	416
APR/MAY/JUNE	24	1	2	APR/MAY/JUNE	1,050	195	213

GOALS AND ACTUAL NEW CLUBS CUMULATIVE



GOALS AND ACTUAL MEMBERS CUMULATIVE



DROPPED CLUBS: 14	231 CLUBS OF 494 ADDED 1 OR MORE NEW MEMBERS	GENDER DISTRIBUTION	
		MALE 6,718 (52.25%)	FEMALE 6,139 (47.75%)
DROPPED MEMBERS		TOTAL FAMILY UNIT MEMBERS 5,359	
DECEASED 83	CLICK HERE FOR CUMULATIVE MEMBERSHIP DATA	FAMILY MEMBERS PAYING HALF DUES 2,836	
CLUB CANCELLED 130			
OTHER 1,672			
TOTAL 1,885			